



# CAMPBELL PROJECT PROPOSAL



# PROJECT GOALS

## POLLINATOR + SUSTAINABLE + EDIBLE GARDEN

- Low water + climate appropriate + pollinator friendly plants
- Pollinator and edible garden

## MODERN MEDITERRANEAN AESTHETIC

- Modern mediterranean design throughout
- Create inviting front and back yard w/consistent plant palette
- Soft palette, drought tolerant plants
- Include landscape lighting throughout - bistro lighting for warmth in backyard

## PRIVACY

- Screening options + soften hardscape along fence for increased privacy
- Conceal trash w/aromatic plants
- Water feature to create peaceful environment to buffer neighborhood dogs/noises
- Container program with specimen plants

## ROOFTOP GARDENS & ADU

- Utilize rooftop as greenroof
- Possible ADU living wall/living art

## FLEXIBLE SPACE/SOCIAL

- Patio with fire pit and outdoor gathering area
- Exterior dining for 10 people + pull up bar for entertainment, socializing and relaxing with family and friends
- Outdoor furniture + styling suggestions





## Wish List

pollinator garden

sustainable + native +  
wild

fire pit + lounge area

family + friends  
entertaining

privacy + sound barriers





# SITE ANALYSIS

- Located in Hermosa Beach
- Single family residence; lot size: 4,000SF / .09 acres
- House was originally developed in 1937 with 2 Bed, 1 Bath
- New construction includes 4 Bed, 3.5 Bath with ADU unit & greenroof



# SITE CONDITIONS

## BACKYARD

### CHALLENGES

- Small space
- Ocean influence - salt, sun, wind, etc.

### OPPORTUNITIES

- Family gathering space + entertainment
- Container garden to soften the architecture
- Edible garden; productive landscape
- Preserve & maximize views
- Specimen planting
- Suggest shaded structure/flexible shade element
- Water feature + more privacy





# SITE CONDITIONS

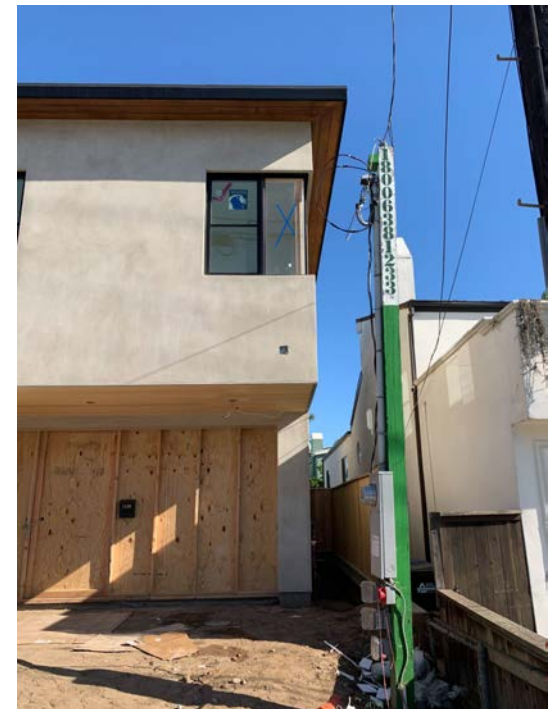
## FRONT YARD

### CHALLENGES

- Full sun exposure
- Ocean influence - salt, sun, wind, etc.

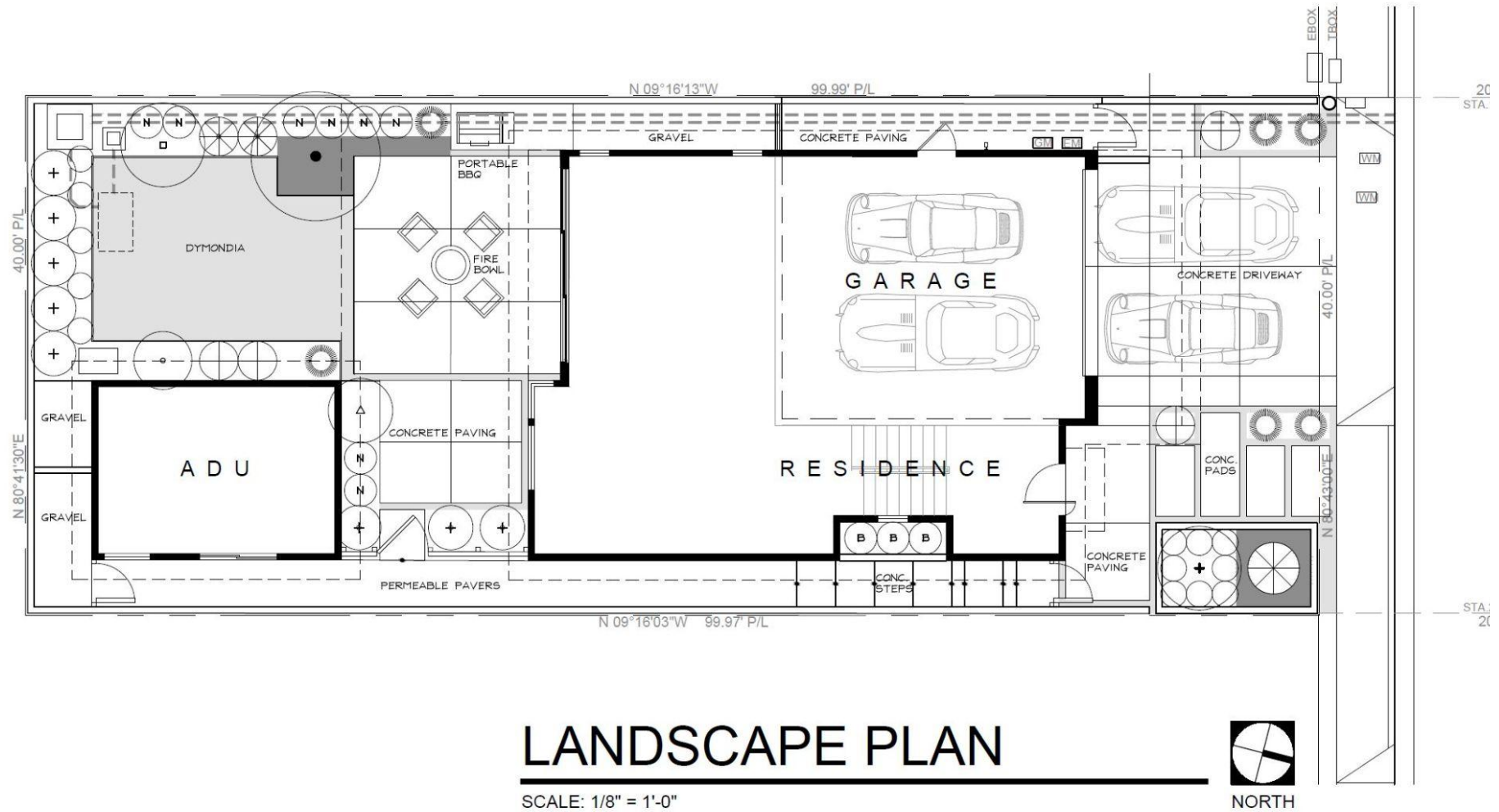
### OPPORTUNITIES

- Maximize ocean views
- Create inviting entryway
- Specimen planting
- Attract native pollinators





# SITE SURVEY / BASE PLAN





# DESIGN INSPIRATION & THEORY



## Bosky

---

The underlying theme in all of our work is one of *Pattern Shift*. We push boundaries and interrupt expectations of landscape in a way that is meaningful, sensitive, & sustainable.

Our work is uncompromisingly unique and aims to create thoughtful landscapes that will satisfy client desires and be a gift to future generations.



## Arterra

---

Arterra is a full-service landscape architecture firm specializing in contemporary, sustainable design. We are dedicated to the art and craft of our profession. Our greatest achievement is creating a meaningful and sustainable landscape legacy.



## Ground Studio

---

At Ground Studio, we envision and craft contextual California landscapes, thoughtfully balancing the character of the land, the identity of the architecture, & the lifestyles of people who live there. We listen and observe to ensure the spirit of the place is revealed. Our designs inspire a deep connection with the land.



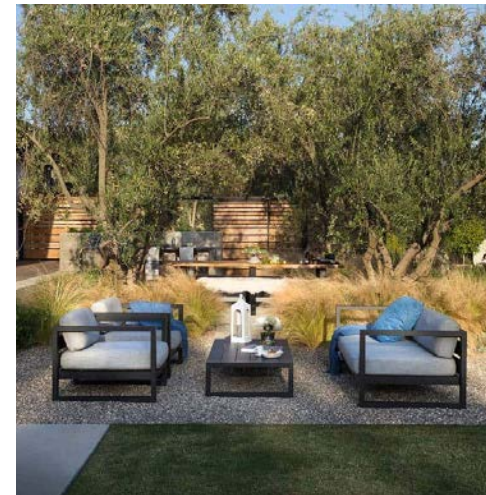


Precedent Study: Montecito Garden  
Montecito, CA



Many months after purchase of an overgrown and out-dated property, this diamond-in-the-rough revealed its true heritage with some historical digging. It came to light that the original architect was Lulah Riggs, an acclaimed architect with many notable works to her name. The landscape design process was greatly informed by original architectural forms and lines, and was modernized in a way that pays homage to the past while integrating contemporary approaches to water conservation, material selection, and current trends in outdoor living. The entire property was renovated including new pool, walls, fences, pathways, patios, planting, lighting, and irrigation.

*Landscape Designer: Rob Maday from Bosky Landscape Architecture*







Precedent Study: Arterra Hillside Garden  
San Francisco, California

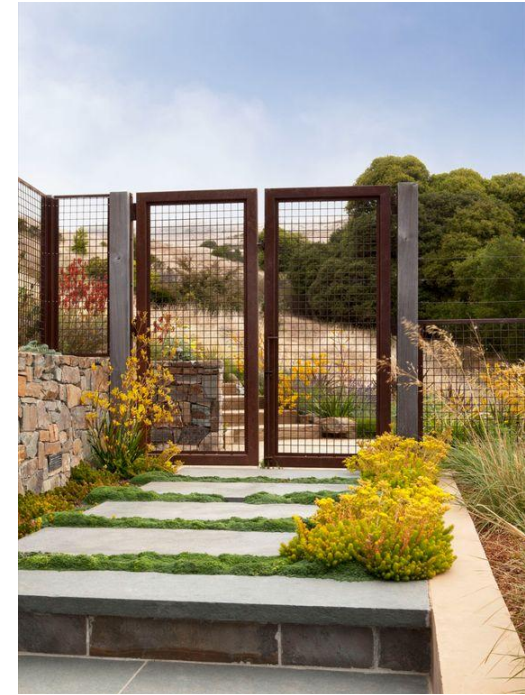


This hillside garden responds to the movement of the wind, flow of the water and warmth of the sun. Undulating landforms and a grassy swale integrate storm water management in an artful way as they divert surface water away from the house.

Following this sinuous swale, the cascading stairway creates a helix-like pattern and links the top of the property to the pool area below. Along this path we nestled a cozy sitting area, perfect for relaxing with a glass of wine and taking in the panoramic views of the San Francisco Bay.

The warm-colored planting palette was a conscious choice to counter the cool breezes and saturate this hillside canvas with painterly sweeps of fiery color. Drought tolerant, low-maintenance, Mediterranean plants attract hummingbirds and bees, providing nectar and habitat. This project is a shining example of functional goals achieved with artistry.

*Landscape Designer: Arterra Landscape Architects*







Precedent Study: Bernard Trainor's Butterfly Garden  
Carmel, California



On a long, slender hillside site in the Santa Lucia Preserve, a grove of native oaks (*Quercus agrifolia*) anchors three pavilions by Feldman Architecture. The planted landscape slips through the interstitial spaces in the architecture – serving to celebrate views beyond, the movement of water across the site, and points of pause and reflection. A central courtyard with staggered concrete pavers and matrix of native grasses serve as both passage and functional space. The buildings are organized around a central arc of concrete, and the butterfly roofs collect rainwater for irrigation. The site design along with the architectural program presents a compelling matrix of inside and out, both anchored to the land and poised to lift off.

The butterfly roofs bring in views of the surrounding hills, expand the main living spaces into the outdoors and also harvest rainwater. Water, an increasingly limited resource, is celebrated throughout the design. Each roof funnels water to a rain chain fountain and into landscape collection pools, which then gather in cisterns where it is stored and used to irrigate the landscape.

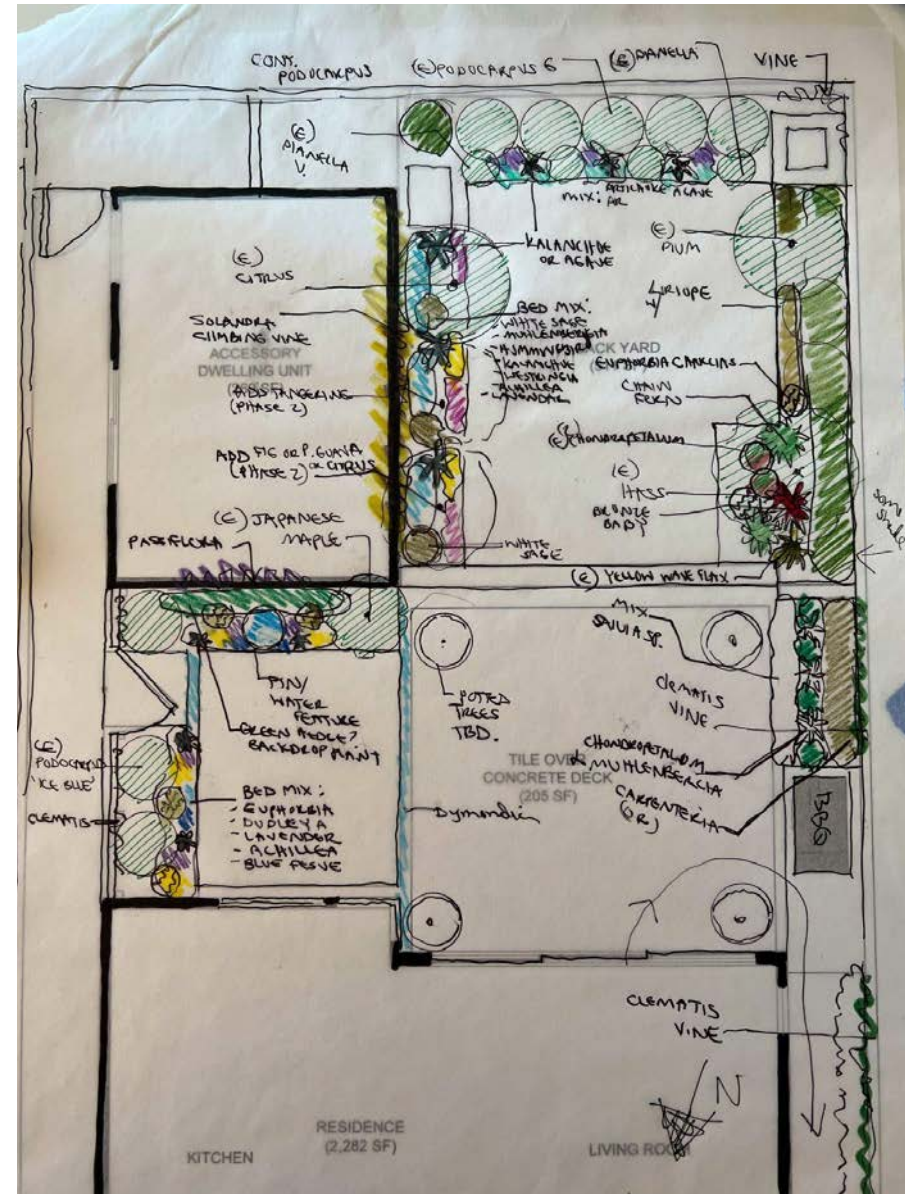
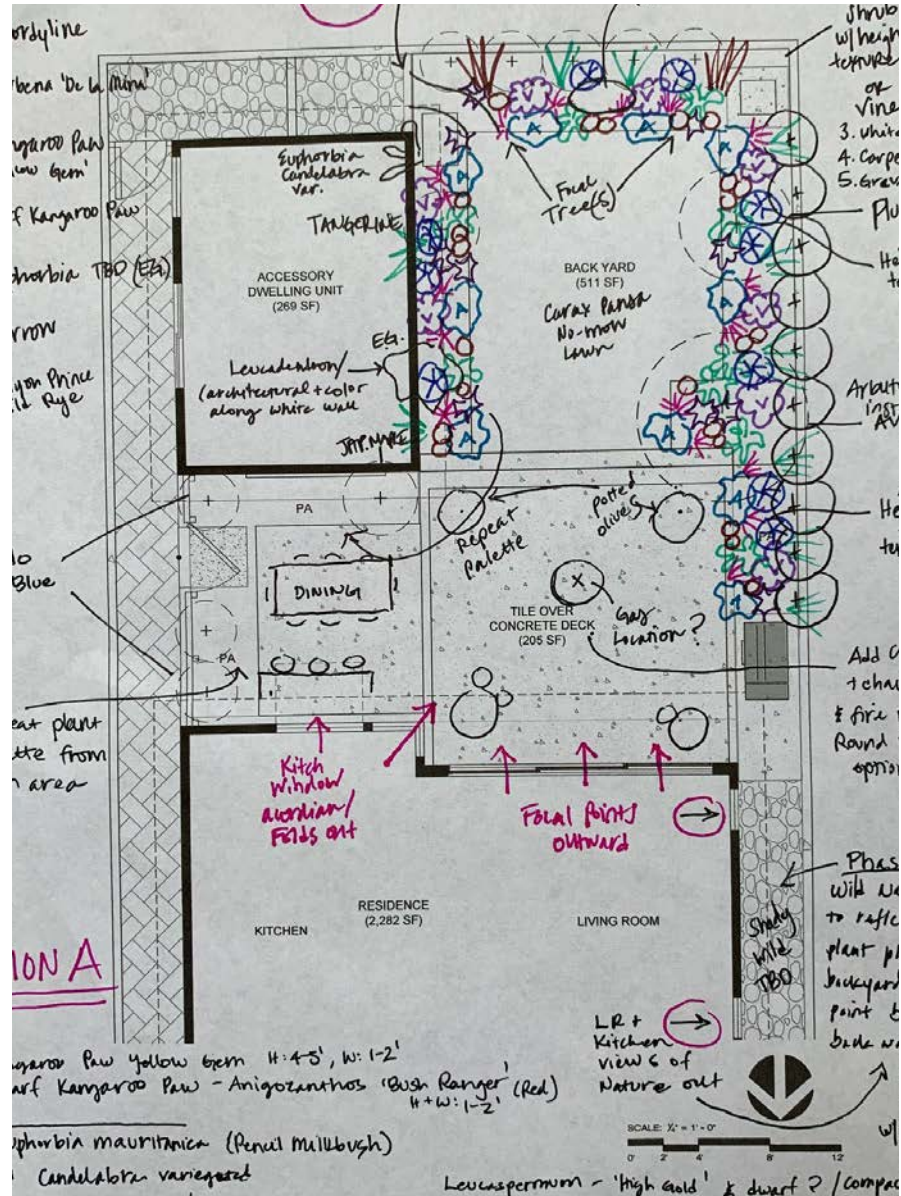
*Landscape Designer: Bernard Trainor from Ground Studio*





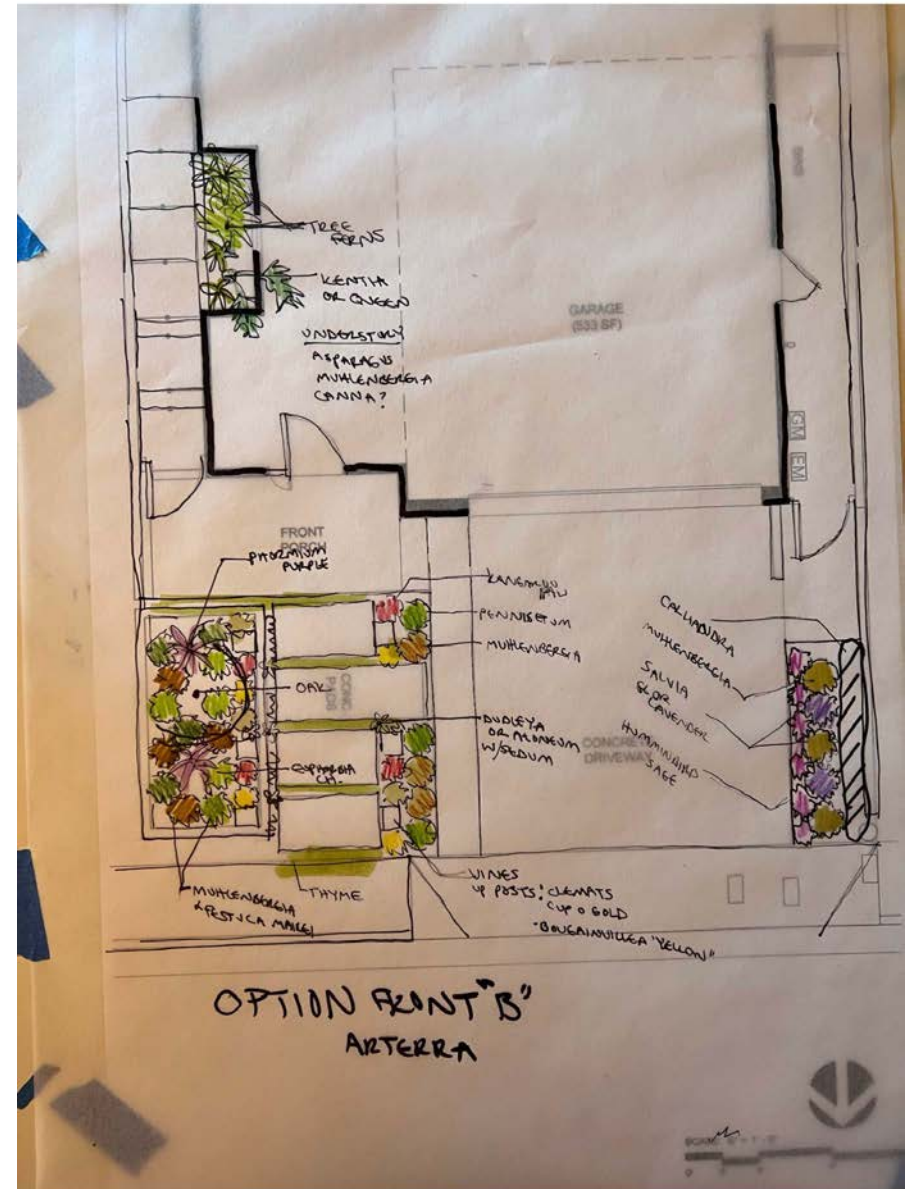
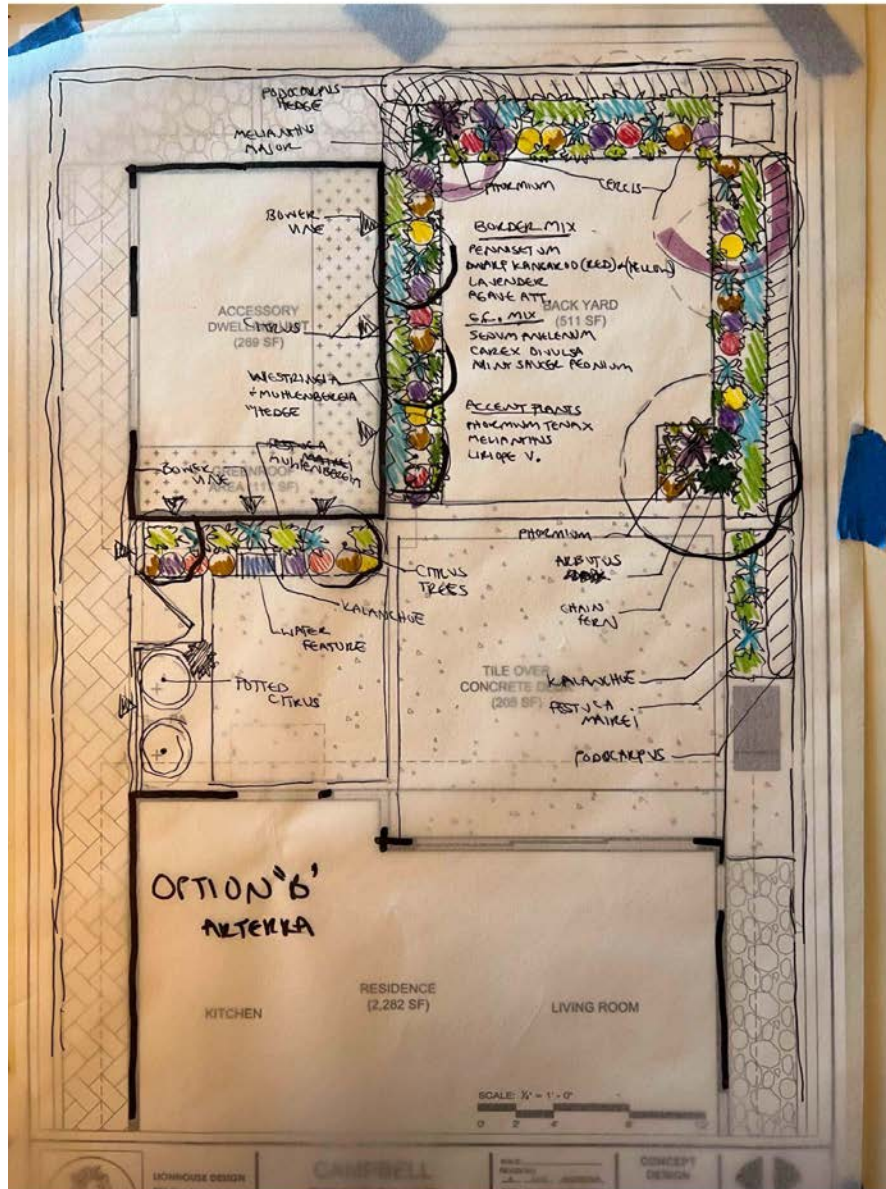
# DIAGRAM SKETCHES

## PROGRAMING + LAYOUT



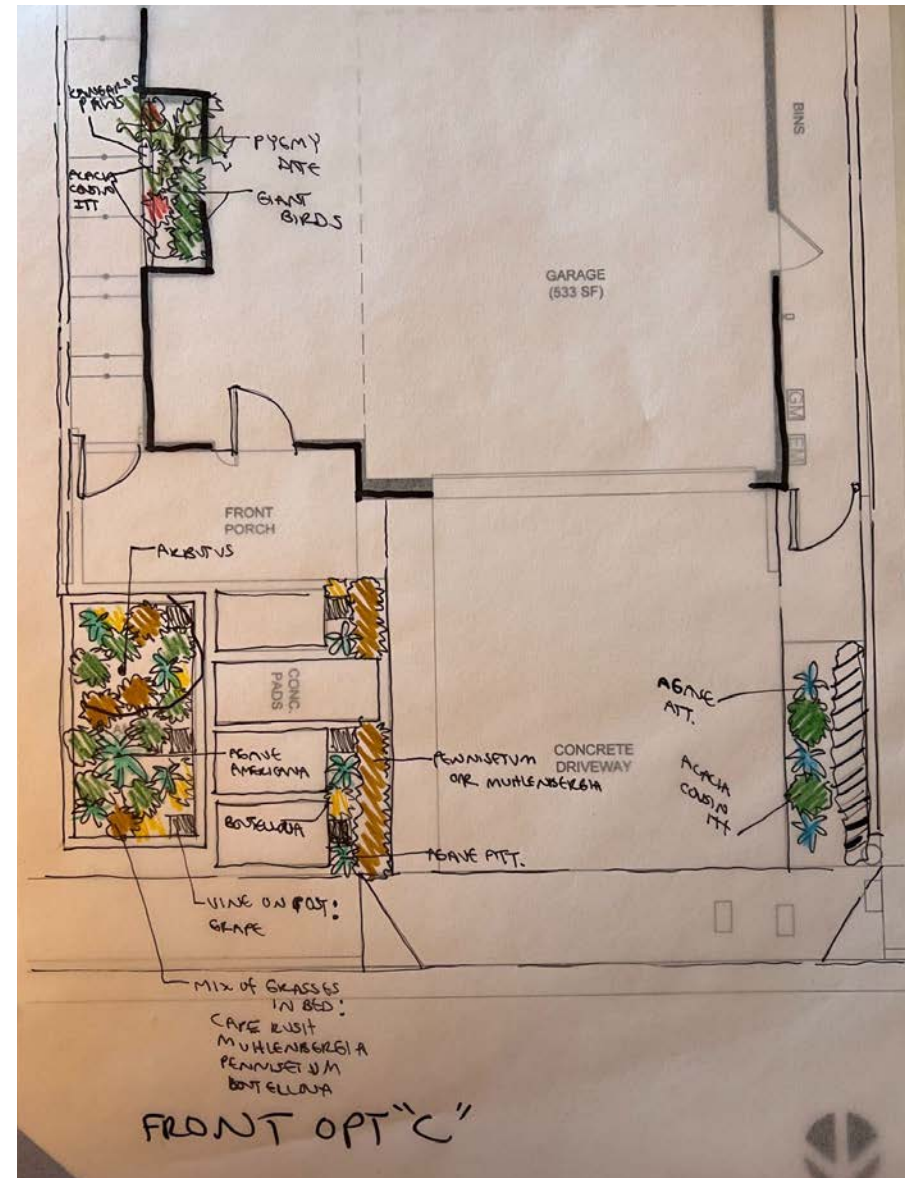
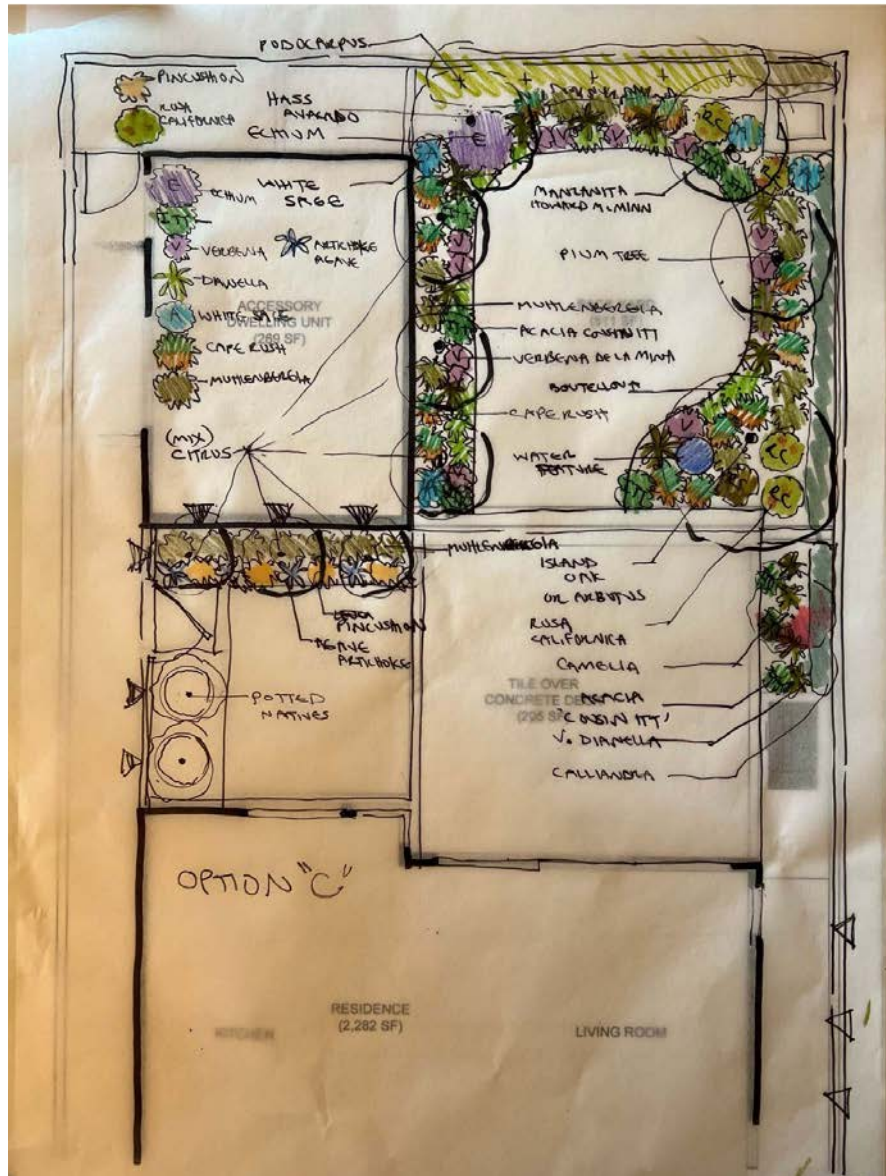


# DIAGRAM SKETCHES





# DIAGRAM SKETCHES





## PLANTS

- water-wise plants with architectural forms, interesting texture and bold color
- climate appropriate plants, natives & companion plants: grevillea, protea, agave, ornamental grasses + groundcovers





## PLANTS

- water-wise plants with bold texture, lush foliage and year-round color
- climate appropriate plants, natives & companion plants: succulents, agaves, aloes, yucca, shrubs





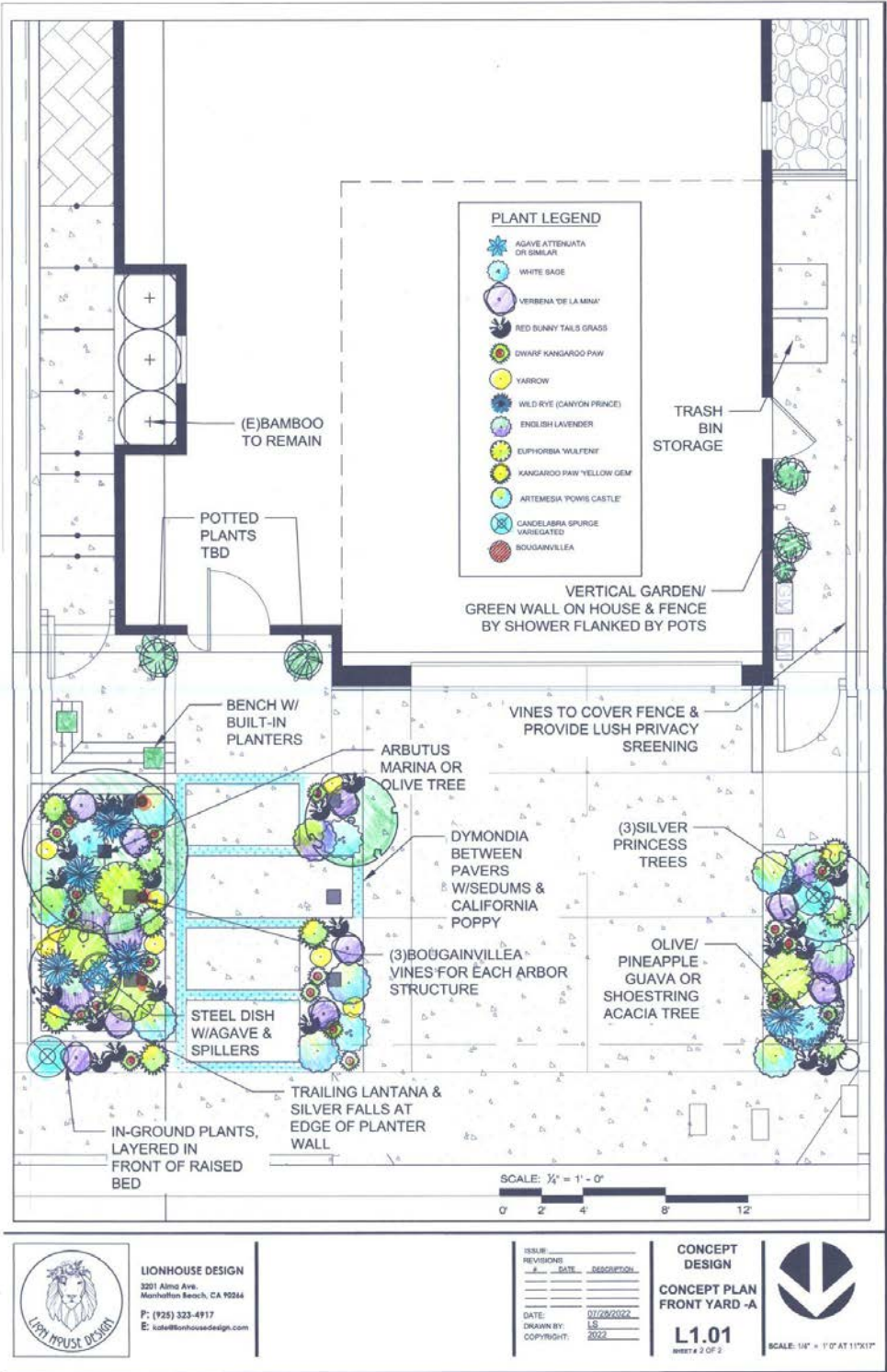
## PLANTS

- versatile container gardens, accent plants + low water alternatives
- climate appropriate plants, natives & companion plants: proteas, bromeliads, cacti, succulents, grasses + ferns



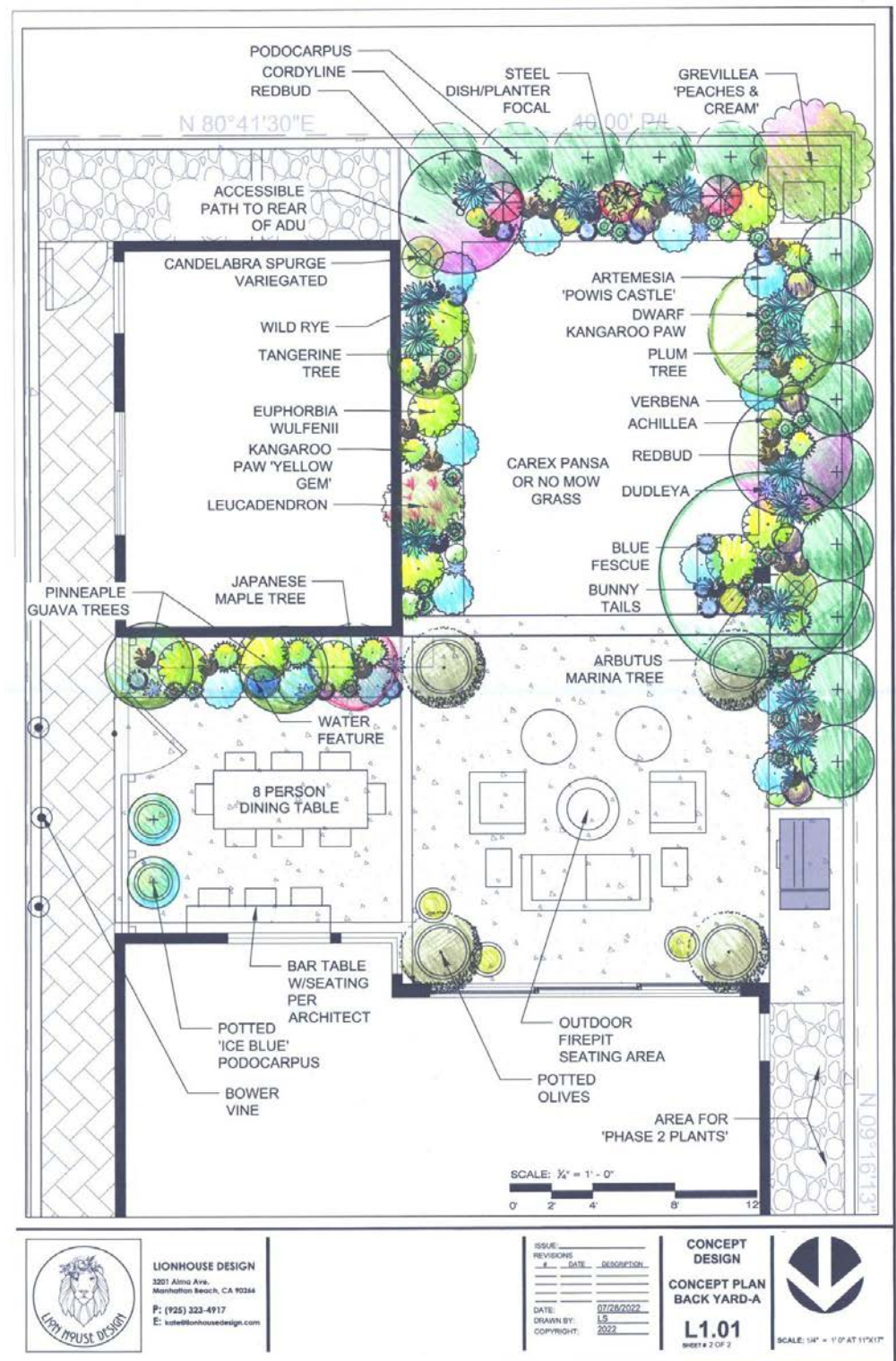


# CONCEPT A - FRONT DESIGN DEVELOPMENT



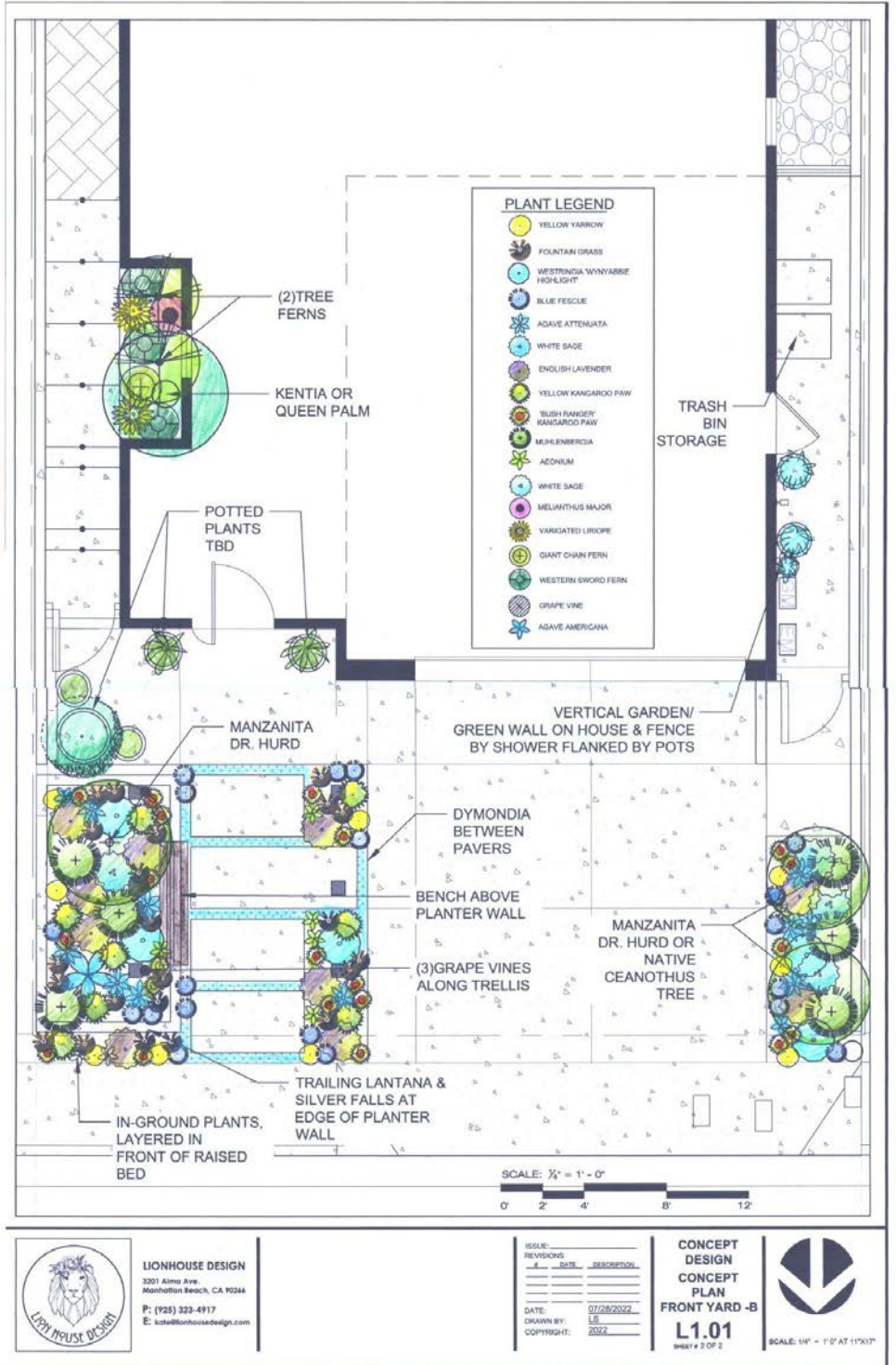


# CONCEPT A - BACK DESIGN DEVELOPMENT





# CONCEPT B - FRONT DESIGN DEVELOPMENT





# CONCEPT B - BACK DESIGN DEVELOPMENT





# FOUNTAINS





# POTTERY





# LIVING WALL





# PLANTING PALETTE



TREES



*Citrus reticulata* 'Dancy'  
Dancy Tangerine



*Ginkgo biloba*  
Ginkgo



*Prunus salicina* 'Santa Rosa'  
Santa Rosa Plum



*Persea americana*  
Lamb Haas Avocado



*Feijoa sellowiana*  
Pineapple Guava



*Arbutus marina*  
Strawberry Tree



*Cercis occidentalis*  
Western Redbud



*Ficus carica* 'Mission'  
Mission Fig Tree



*Prunus persica*  
Nectarine



*Morus macroura*  
Pakistani Mulberry



*Tibouchina heteromalla*  
Silver leaf Princess Flower



*Citrus aurantifolia* 'Bearss'  
Lime



# PLANTING PALETTE



SHRUBS



*Grevillea Peaches & Cream*  
Peaches & Cream Grevillea



*Carpenteria californica*  
Bush Anemone



*Achillea millefolium*  
Yarrow



*Verbena lilacina 'De La Mina'*  
Cedros Island Verbena



*Salvia apiana*  
White Sage



*Euphorbia wulfenii*  
Mediterranean Spurge



*Leucospermum 'High Gold'*  
High Gold Pincushion



*Leucadendron 'Safari Sunset'*  
Safari Conebush



*Artemisia 'Powis Castle'*  
Pink Powderpuff



*Lavandula stoechas*  
Spanish Lavender



*Diplacus aurantiacus*  
Monkey Flower



*Heuchera maxima*  
Alum Root



*Salvia spathacea*  
Hummingbird Sage



*Polystichum munitum*  
Western Sword Fern



*Calliandra haematocephala*  
Pink Powderpuff



*Woodwardia fimbriata*  
Giant Chain Fern



*Melianthus minor*  
Dwarf Honey Flower



*Calliandra grandiflora*  
Rock Purslane



# PLANTING PALETTE



GROUNDCOVERS



*Lantana montevidensis*  
Purple Lantana



*Gazania 'Tiger Stripes'*  
African Daisy 'Tiger Stripes'



*Gazania 'Big Kiss'*  
African Daisy 'Big Rose'



*Kalanchoe beharensis*  
Velvet Elephant Ear



*Aeonium Sunburst*  
Copper Pinwheel



*Dudleya Brittonii*  
Giant Chalk Dudleya

GRASSES



*Carex divulsa*  
Berkeley Sedge



*Pennisetum messiacum*  
Red Bunny Tails



*Carex glauca*  
Blue Sedge



*Leymus 'Canyon Prince'*  
Wild Rye



*Muhlenbergia 'Pink Flamingo'*  
Pink Flamingo Muhly



*Juncus patens*  
Common Rush

VINES



*Passiflora edulis*  
Passionfruit Vine



*Mandevilla*  
Pink Mandevilla



*Lonicera ciliosa*  
Honeysuckle Vine



*Vitis aliformica*  
California Natie Grape Vine



# PLANTS: BY COLOR

## POLLINATORS & NATIVES

### BLUE / VIOLET

- *Verbena lilacina* 'De La Mina' (Cedros Island Verbena)
- *Tibouchina heteromalla* (Silver Leafed Princess Flower)
- *Podocarpus elongatus* 'Icee Blue' (Icee Blue Fern Pine)
- *Lavandula* 'Hidcote Blue' (English Lavender)

### RED / PINK

- *Phormium tenax* (Bronze Baby Flax)
- *Leucadendron* 'Safari Sunset' (Safari Conebush)
- *Epilobium canum* (California Fuchsia)
- *Anigozanthos* 'Bush Ranger' (Dwarf Kangaroo Paw 'Bush Ranger')
- *Cordyline australis* 'Pink Stripe' (Pink Stripe Cordyline)
- *Pennisetum massaicum* 'RBT' (Fountain Grass 'Red Bunny Tails')

### WHITE

- *Epilobium* 'White' (White California Fuchsia)
- *Carpenteria californica* (Bush Anemone)
- *Ceanothus thyrsiflorus* 'Snow Flurry' (Snow Flurry CA Lilac)
- *Salvia apiana* (White Sage)
- *Dudleya brittonii* (Dudleya)
- *Euphorbia candelabra* 'Variegata' (Candelabra Spurge)
- *Festuca glauca* 'Elijah Blue' (Blue Fescue Grass)
- *Leymus condensatus* 'Canyon Prince' (Canyon Prince Wild Rye)
- *Dymondia margaretae* (Dymondia)

### YELLOW/ORANGE

- *Leucospermum* 'High Gold' (High Gold Pincushion)
- *Anigozanthos* 'Yellow Gem' (Kangaroo Paw 'Yellow Gem')
- *Achillea millefolium* (Yarrow)
- *Euphorbia wulfenii* (Mediterranean Spurge)
- *Bulbine frutescens* 'Tiny Tangerine' (Tangerine Stalked Bulbine)
- *Eschscholzia californica* (California poppy)

### SALMON

- *Grevillea* 'Peaches and Cream' (Peaches and Cream Grevillea)



# PLANT LIST: GREENROOF

## Native Grasses

- *Melinis nerviglumis* (Ruby Grass)
- *Pennisetum massaicum* 'RBT' (Fountain Grass 'Red Bunny Tails')
- *Festuca glauca* 'Elijah Blue' (Blue Fescue Grass)
- *Leymus condensatus* 'Canyon Prince' (Canyon Prince Wild Rye)
- *Bulbine frutescens* 'Tiny Tangerine' (Tangerine Stalked Bulbine)

## Succulents + Sedums

- *Sedum* 'Angelina' (Stonecrop)
- *Dudleya brittonii* (Dudleya) / *Dudleya pulverulenta*
- Iceplant

## Small Perennials (companion plants)

- *Bulbine frutescens* 'Tiny Tangerine' (Tangerine Stalked Bulbine)

*\*I suggest getting a wildflower seed mix from Theodore Payne Nursery. They have many native mixes to choose from!*

## Native Wildflowers

### [Wildflowers image with names](#)

- *Achillea millefolium* (Yarrow)
- *Clarkia*
- *Eschscholzia californica* (California poppy)
- *Layia platyglossa* (Tidy Tips flowers)
- *Dodecatheon redolens* (Shooting Star)
- *Mariposa lily*
- *Aquilegia formosa* (Western Columbines)
- Buttercups, Cream Cups, Bird's eye
- Mountain Pennyroyal
- Baby Blue Eyes, Chinese Hats





# PLANT LIST: LIVING WALL

## Shade Plants, Grasses and Ferns

- *Asparagus Fern*
- *Blue star fern*
- *Pothos*
- *Liriope*
- *Spider Plant*
- *Antherium*
- *Potato Vine*
- *Bromeliads: reds, pinks, striped greens, purples, and gorgeous unique tropical flowers*
- *Zebrinia*
- *Calathea*
- *Heuchera*
- *Japanese forest grass: shades of lime green to dark purple*
- *Carex*
- *Coral Bells*

## Native Wildflowers, ferns and shade plants

### [Wildflowers image with names](#)

- *Western Columbine, Chinese Hats*
- *Giant chain fern*
- *Western Sword Fern*

## Succulents + Sedums

- *Dudleya brittonii* and other dudleyas
- *Iceplant, sedum 'angelina' & stonecrops*
- *Echeveria (many kinds), hen & chicks, aeonium: rosettes*
- *Burros Tail, Fish Hooks and string of pearls for trailers*



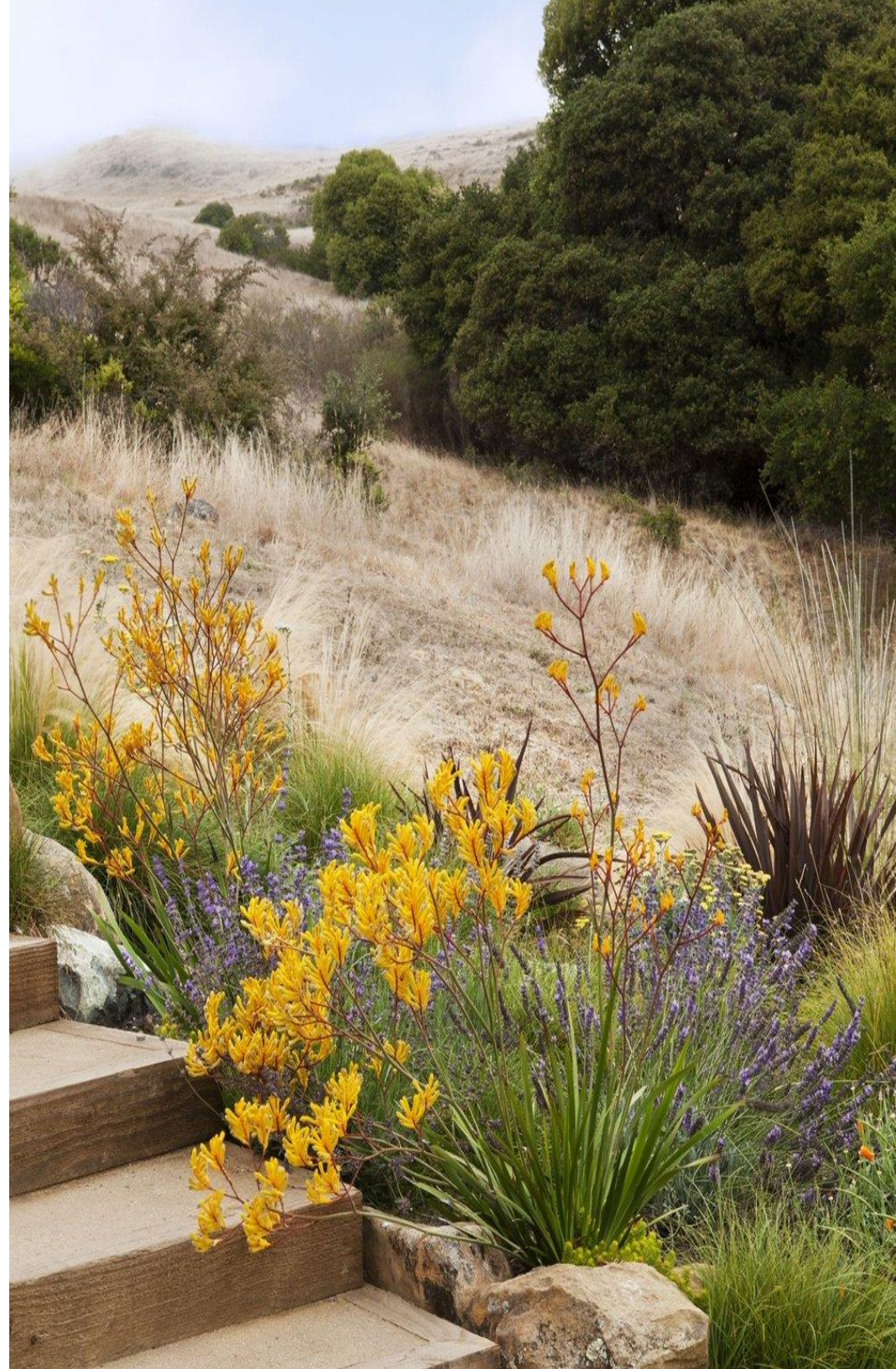


# FINAL DESIGN CONCEPT

## BIOLOGICALLY ACTIVE POLYCULTURE

MIX OF MEDITERRANEAN, EDIBLE AND CALIFORNIA  
NATIVE PLANTS TO CREATE A MODERN  
CALIFORNIA AESTHETIC INCLUDING:

- Color palette: green, purple & yellow
- Pops of complimentary red [evergreens & perennials]
- Edible plants + climbing vines
- Mediterranean plant focus [sunny CA coastal climate]
- Agaves + euphorbia + succulents [architectural interest]
- Fruit trees + native pollinator plants
- Companion plants from geographically similar climates [Australia, NZ + South Africa]
- Natural + sustainable elements such as wood, clay, stone, organic soil, etc.
- Greenroof + living wall design suggestions
- Edible landscape with a California modern Mediterranean aesthetic





# DESIGN RENDERING A

## BACKYARD RENDERING A

### RESIDENCE, BACKYARD

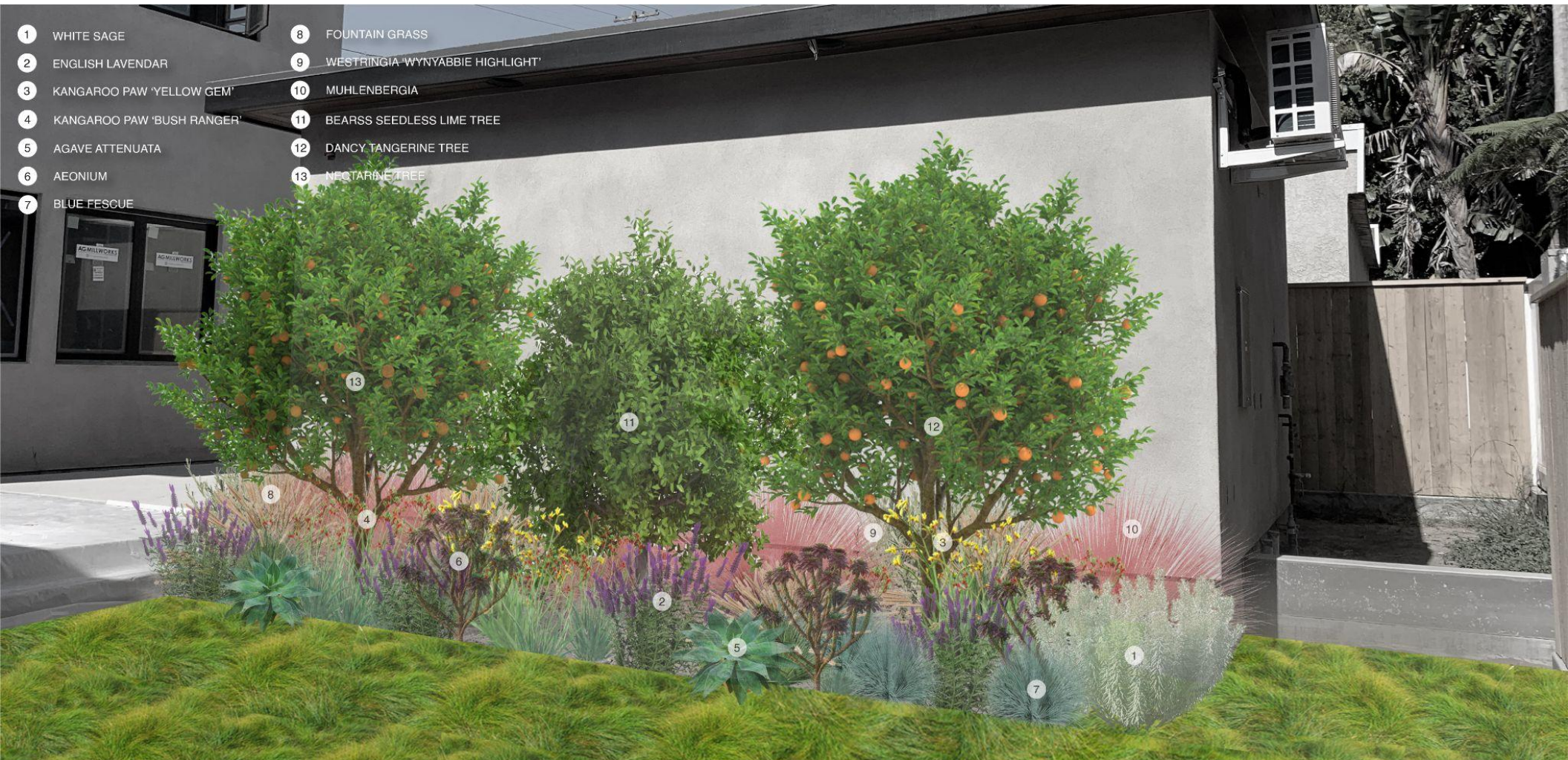




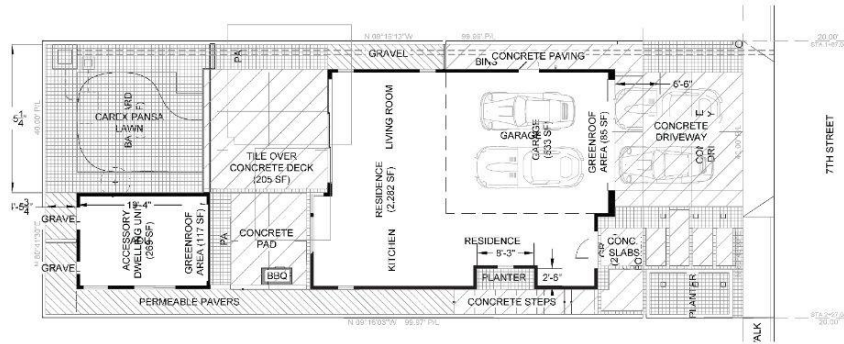
# DESIGN RENDERING B

## BACKYARD RENDERING B

### RESIDENCE, BACKYARD







1 AREA BREAKDOWN PLAN  
SCALE: 1/8" = 1'-0"



2 LANDSCAPE PLAN  
SCALE: 1/8" = 1'-0"

WATER CONSERVATION STATEMENT:

1. THE LANDSCAPE AND IRRIGATION DESIGN FOR THIS PROJECT WILL INCORPORATE BEST MANAGEMENT PRACTICES WITHIN MWEL (MODEL WATER EFFICIENT LANDSCAPE ORDINANCE). AN AUTOMATED CONTROLLER WITH A RAIN SENSOR WILL BE SPECIFIED TO EFFICIENTLY IRRIGATE THE LANDSCAPE AND PREVENT WATER FROM BEING WASTED. THE DESIGN COMBINES PLANTS WITH SIMILAR WATER NEEDS. THE DESIGN USES A MAJORITY OF PLANTS THAT ARE CATEGORIZED AS MODERATE OR LOW AND HAVE BEEN SELECTED FOR THEIR DURABILITY, EASE OF MAINTENANCE, AND LOW WATER NEEDS AFTER THEY BECOME ESTABLISHED. A 3" LAYER OF MULCH (MIN.) WILL BE APPLIED IN SHRUB BEDS AND UNPLANTED AREAS; A 2" LAYER OF MULCH IN GROUND COVER AREAS; AND A 3" LAYER IN SHREDDED STABILIZING MULCH FOR SLOPES.

AREA BREAKDOWN

	PLANTABLE LANDSCAPE AREA	877.97 SF
	PERMEABLE SURFACE AREA	333.38 SF
	IMPERMEABLE SURFACE AREA	1,127.1 SF
	<b>TOTAL</b>	<b>2,338.5 SF</b>

TABULATIONS

SITE DATA:

Total Site Area:	4,000 s.f.
Total Building Area:	1,661 s.f.
LSHS Area + Driveway:	2,338.5 s.f.

SITE REQUIREMENTS:

Turf Required (>20%):	190 s.f.	208 s.f.
Permeable Area Req. (>50%):	1,169.25 s.f.	1,211.35 s.f.

PLANT SCHEDULE

SYM	QTY	COMMON NAME	BOTANICAL NAME	PLANTING SIZE	NOTES
<b>TREES</b>					
+	2	Marina Strawberry Tree	Arbutus 'Marina'	24" box	Speciman to be tagged by designer
+	1	Ginkgo	Ginkgo Biloba	15 gal	
+	1	Western redbud	ceres occidentalis	15 gal	
+	1	Nectarine	Prunus persica var. nucipersica	15 gal	
+	1	Hass Avocado	Persea americana 'Hass'	15 gal	
+	1	Santa Rosa Plum	Prunus salicina 'Santa Rosa'	15 gal	
+	1	Dancy Tangerine	Citrus reticulata 'Dancy'	15 gal	
+	1	Client's tree	Almond Tree		*Existing, client's tree...
+	1	Pakistani Mulberry	Morus macroua	15 gal	
+	1	Lime Tree	Citrus aurantifolia 'Bearse Seedless'	15 gal	*To be planted in pot
+	1	Fig Tree	Ficus carica 'Mission' or Kadota	15 gal	
+	2	Pineapple Guava	Feijoa sellowiana	15 gal	(1) to be planted in pot



LIONHOUSE DESIGN

3201 Alma Ave.  
Manhattan Beach, CA 90266

P: (925) 323-4917  
E: kate@lionhousedesign.com

ISSUE: _____		
REVISIONS		
#	DATE	DESCRIPTION
DATE:	08/24/2022	
DRAWN BY:	LS	
COPYRIGHT:	2022	

CONSTRUCTION DOCUMENTS

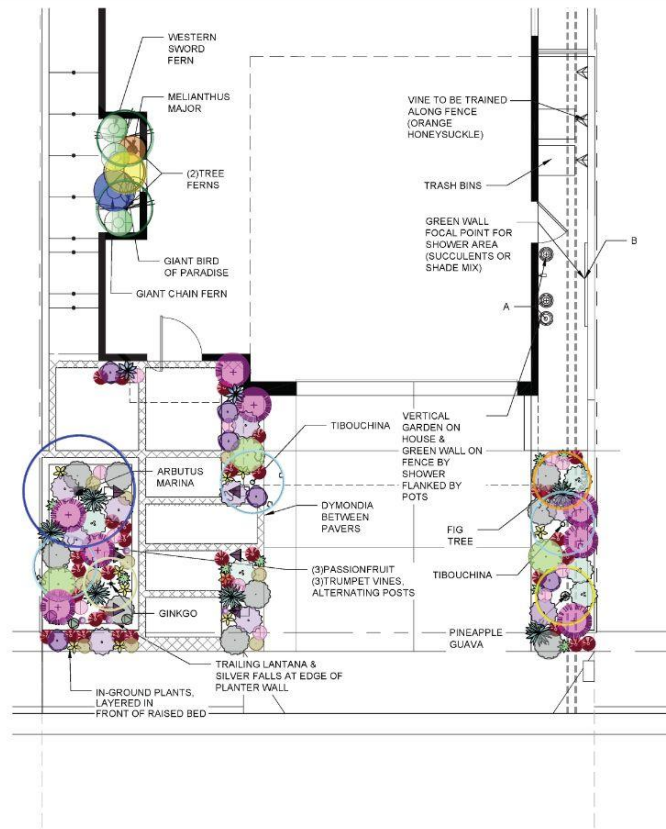
SUSTAINABILITY PLAN



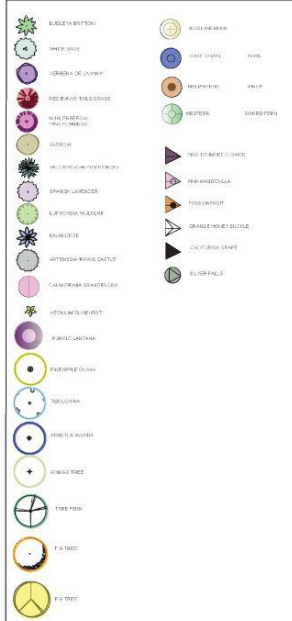
SCALE: 1/8" = 1'-0"

L0.00  
SHEET #1 OF 5





#### PLANT LEGEND



#### PLANT IMAGES



#### PLANTING NOTES:

1. PLANT MATERIAL TO BE HEALTHY SPECIMENS, FREE FROM DISEASE AND/OR DAMAGE. CONTRACTOR TO ASSESS PLANT HEALTH AND SELECT BEST AVAILABLE, MATURE PLANTS FOR AN ESTABLISHED GARDEN AESTHETIC.
2. PLANT QUANTITIES ARE PROVIDED FOR CONTRACTOR'S CONVENIENCE ONLY AND SHALL BE VERIFIED BY CONTRACTOR BY REVIEWING PLANTING PLAN SYMBOLS AND PLANT SPACING AND APPROVED BY DESIGNER.
3. CONTRACTOR SHALL BE RESPONSIBLE TO MAINTAIN ALL PLANT MATERIALS INCLUDING SOD/SEED AREAS IN A HEALTHY STATE DURING CONSTRUCTION. ANY DAMAGE TO PLANT MATERIAL DUE TO NEGLIGENCE BY THE CONTRACTOR SHALL BE REPAIRED OR REPLACED AT THE CONTRACTOR'S EXPENSE.
4. CONTRACTOR TO PROVIDE NEW ORGANIC SOIL PREP TO A MIN. DEPTH OF 8"
5. THOROUGHLY TILL IN AMENDMENTS INTO TOP LAYER OF SOIL AND CULTIVATE INTO TOP 6" TO 8" OF SOIL WITH ROTOTILLER OR HAND CULTIVATE.
6. ALL PLANT PITS TO BE 1 1/2 TIMES SIZE OF ROOTBALL.
7. TOPDRESS WITH 3" OF XXXXXX MULCH (OR APPROVED EQUAL) IN ALL LOCATIONS, INCLUDING ALL BEDS AND PLANTERS.
8. VINES TO BE TRAINED ALONG WALLS/STRUCTURE ACCORDING TO PLAND/DESIGNER SPECIFICATIONS.

#### 1 PLANTING PLAN - FRONT YARD

SCALE: 1/4" = 1'-0"

#### 2 DETAILS- FRONT YARD

SCALE: NTS



LIONHOUSE DESIGN

3201 Alma Ave.  
Manhattan Beach, CA 90266

P: (925) 323-4917  
E: kate@lionhousedesign.com

ISSUE:	REVISIONS	DATE	DESCRIPTION
	1		
	2		
	3		
	4		
	5		
	6		
	7		
	8		
	9		
	10		

#### CONSTRUCTION DOCUMENTS

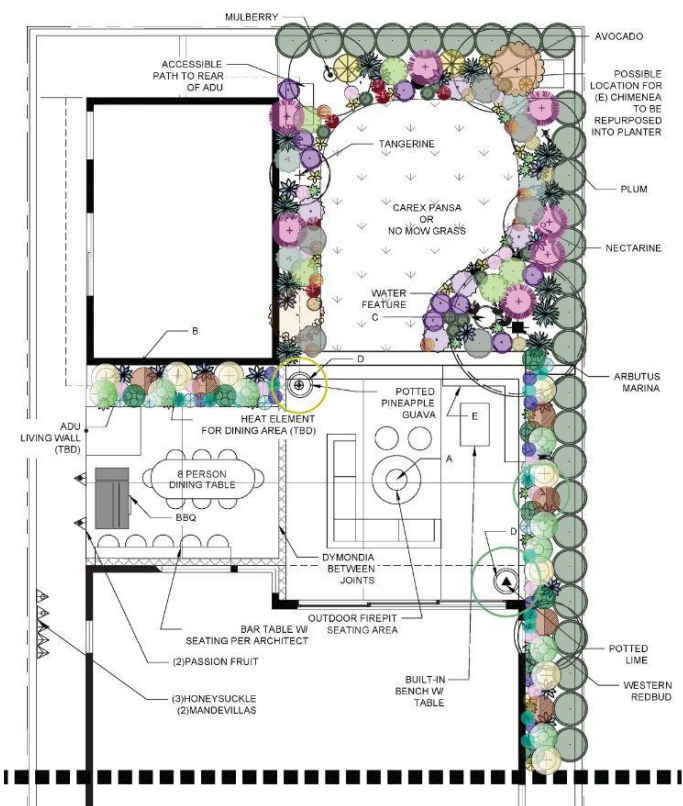
#### PLANTING PLAN - FRONT



SCALE: 1/4" = 1'-0"

L1.00  
SHEET #2 OF 5





1. PLANT MATERIAL TO BE HEALTHY SPECIMENS, FREE FROM DISEASE AND/OR DAMAGE. CONTRACTOR TO ASSESS PLANT HEALTH AND SELECT BEST AVAILABLE, MATURE PLANTS FOR AN ESTABLISHED GARDEN AESTHETIC.
2. PLANT QUANTITIES ARE PROVIDED FOR CONTRACTOR'S CONVENIENCE ONLY AND SHALL BE VERIFIED BY CONTRACTOR BY REVIEWING PLANTING PLAN SYMBOLS AND PLANT SPACING AND APPROVED BY DESIGNER.
3. CONTRACTOR SHALL BE RESPONSIBLE TO MAINTAIN ALL PLANT MATERIALS INCLUDING SOD/SEED AREAS IN A HEALTHY STATE DURING CONSTRUCTION. ANY DAMAGE TO PLANT MATERIAL DUE TO NEGLIGENCE BY THE CONTRACTOR SHALL BE REPAIRED OR REPLACED AT THE CONTRACTOR'S EXPENSE.
4. CONTRACTOR TO PROVIDE NEW ORGANIC SOIL PREP TO A MIN. DEPTH OF 8".
5. THOROUGHLY TILL IN AMENDMENTS INTO TOP LAYER OF SOIL AND CULTIVATE INTO TOP 6" TO 8" OF SOIL WITH ROTOTILLER OR HAND CULTIVATION.
6. ALL PLANT PITS TO BE 1 1/2 TIMES SIZE OF ROOTBALL.
7. TOPDRESS WITH 3" OF XXXXXX MULCH (OR APPROVED EQUAL) IN ALL LOCATIONS, INCLUDING ALL BEDS AND PLANTERS.
8. VINES TO BE TRAINED ALONG WALLS/STRUCTURE ACCORDING TO LANDSCAPE SPECIFICATIONS.

1 PLANTING T  
SCALE: 1/4" = 1'-0"



**A FIRE BOWL**  
SCALE: NTS



**B** LIVING WALL  
SCALE: NTS



**C FOUNTAIN**  
SCALE: NTS



**D** PATIO POTS  
SCALE: NTS



**E BUILT-IN BENCH**  
SCALE: NTS

**2** DETAILS  
SCALE: NTS



LIONHOUSE DESIGN

3201 Alma Ave.  
Manhattan Beach, CA 90266

P: (925) 323-4917

E: [kate@lionhousedesign.com](mailto:kate@lionhousedesign.com)

CAMPBELL  
RESIDENCE

1120 7TH STREET  
HERMOSA BEACH, CA 90254

ISSUE: \_\_\_\_\_  
REVISIONS

#	DATE	DESCRIPTION
---	------	-------------

\_\_\_\_\_


0000-0000-0000-0000

DATE: 08/24/2022  
DRAWN BY: JS

DRAWN BY: CS  
COPYRIGHT: 2022

CONSTRUCTION  
DOCUMENTS

PLANTING  
PLAN -BACK

















0 2 4 6  
SCALE: 1/4" = 1' 0"

**L1.01**

SHEET #3 OF 5



## PLANT SCHEDULE

SYM	QTY	COMMON NAME	BOTANICAL NAME	PLANTING SIZE	NOTES
<b>TREES</b>					
	2	Marine Strawberry Tree	Arbutus Marina	24" box	Specimen to be tagged by designer
	1	Ginkgo	Ginkgo Biloba	15 gal	...
	1	Western redbud	Cercos occidentalis	15 gal	...
	1	Nectarine	Prunus persica var. nucupensica	15 gal	...
	1	Hass Avocado	Persea americana 'Hass'	15 gal	...
	1	Santa Rosa Plum	Prunus salicina 'Santa Rosa'	15 gal	...
	1	Dancy Tangerine	Citrus reticulata 'Dancy'	15 gal	...
	Client's tree	Almond Tree	Prunus Wood Colony Almond		*Existing, client's tree ...
	1	Pakistani Mulberry	Morus macroura	15 gal	...
	1	Lime Tree	Citrus aurantifolia 'Bearss Seedless'	15 gal	*To be planted in pot
	1	Fig Tree	Ficus carica 'Mission' or Kadota	15 gal	...
	2	Pineapple Guava	Feljoa selowiana	15 gal	(1) to be planted in pot
<b>SHRUBS &amp; PERENNIALS</b>					
	2	New Zealand Tree Fern	Dicksonia	24" box	TBD by contractor. Chamaedorea costaricensis/plum osaradicata or Rhaphis Palm. Height to be 8' or taller
	2	Peaches and Cream Grevillea	Grevillea 'Peaches and Cream'	15 gal	...
	10	Bush anemone	Carpenteria californica	5 gal	...
	4	Silver Leafed Princess Flower	Tibouchina heteromalla	15 gal	...
	1	Leucadendron 'Safari Sunset'	Safari Conebush	5 gal	...
	15	Artemisia 'Powis Castle'	Powis Castle Artemisia	5 gal	...
	4	High Gold Leucospermum	Leucospermum 'High Gold'	5 gal	...
	8	Mediterranean Spurge	Euphorbia characias wulfenii	5 gal	...
	20	Pink Powderpuff	Calliandra haematocephala	15 gal	TBD by contractor. Espallier to form hedge

	9	White Sage	Salvia apiana	1 gal	...
	15	Spanish lavender	Lavandula stoechas	1 gal	...
	25	Rock Purslane	Calandrinia grandiflora	5 gal	...
	15	Cedros Island Verbena	Verbena ilacina 'De La Mina'	5 gal	...
	15	Yellow Yarrow	Achillea 'Firefly Sunshine'	1 gal	...
	10	Island alarm root	Heuchera maxima	1 gal	...
	7	Monkey Flower (Orange/yellow)	Diplacus aurantiacus	1 gal	...
	12	Western Sword Fern	Polystichum munifolium	5 gal	...
	8	Hummingbird Sage	Salvia spathacea	1 gal	...
	10	African Daisy 'Tiger Stripes' & African Daisy 'Kiss Rose'	Gazania 'Tiger Stripes' African Daisy 'Kiss Rose'	1 gal	Mix (8 of each) Orange Stripes & White w/ Purple
	1	Dwarf Honey Flower	Melanthus minor	5 gal	...
	2	Giant Chain Fern	Woodwardia fimbriata	5 gal	(1) for pot by shower
	2	Giant Bird of Paradise	Stelitzia nicotai	15 gal	TBD by contractor/designer 12' or taller
<b>SUCCULENTS</b>					
	10	Velvet Elephant Ear/Felt Plant	Kalanchoe beharensis	5 gal	Sub: Kalanchoe beharensis var. subnuda 'Bluesk'
	20	Sunburst Aeonium	Aeonium 'Sunburst'	1 gal	...
	23	Dudleya	Dudleya brittonii	1 gal	...
<b>GRASSES</b>					
	15	Pink Flamingo Muhly Grass	Muhlenbergia capillaris 'Pink Flamingo'	5 gal	...
	17	Wild Rye	Leymus con. 'Canyon Prince'	5 gal	...
	35	Red Bunny Tail Fountain Grass	Pennisetum messiacum	1 gal	...
	10	Blue Sedge	Carex glauca	1 gal	...
	10	Berkeley Sedge	Carex divulsa	1 gal	...
	12	Rush	Juncus patens	1 gal	...

## GROUNDCOVERS &amp; VINES

	3	Pink Trumpetflower	Podranca ricasoliana	5 gal	Sub: Bower Vine, pinwhite variegated
	2	Pink Mandevilla	Mandevilla	5 gal	...
	5	Passiflora Vine	Passiflora edulis	15 gal	...
	1	California Native Grape	Vitis californica	5 gal	...
	6	Orange Honeysuckle	Lonicera ciliosa	15 gal	...
	60sf	Dymondia	Dymondia margaritae	flats	In between concrete slabs throughout site (60sqft)
	2	Silver Falls	Dichordra argentea 'Silver Falls'	Hanging Baskets	*spillers for front planter. Sub: Fishhooks senecio
	5	Trailing Lantana (Purple)	Lantana montevidensis	1 gal	Purple
	TBD	Wildflower Mix	Theodore Native Wildflower Seed Mix	seed	Green Roof. TBD by contractor
	210 sqft	Meadow Sedge	Carex pansa		



## LIONHOUSE DESIGN

3201 Alma Ave.  
Manhattan Beach, CA 90266

P: (925) 323-4917

E: kate@lionhousedesign.com

ISSUE: ...	
REVISIONS	
#	DATE DESCRIPTION
DATE:	09/00/0000
DRAWN BY:	XX
COPYRIGHT:	0000

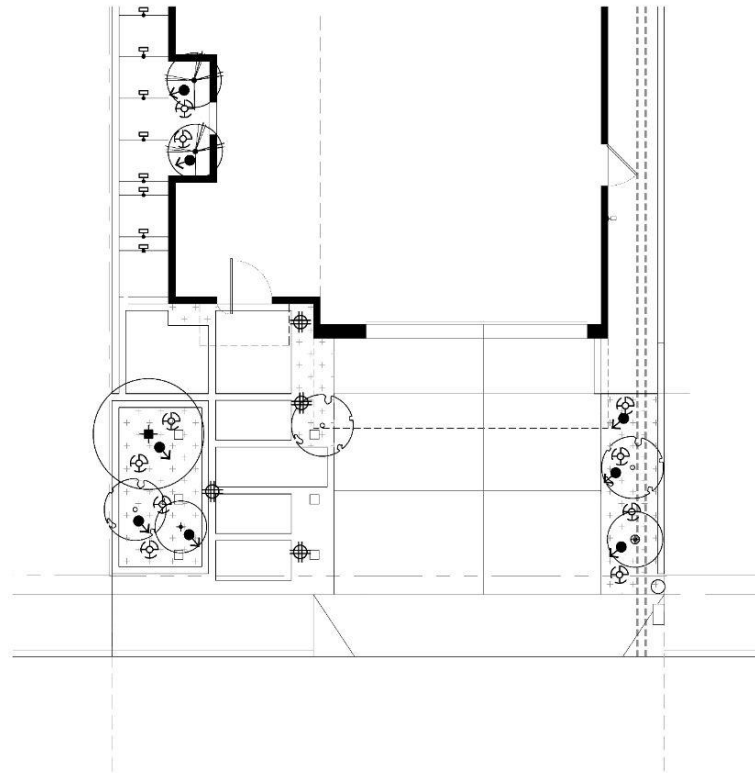
## CONSTRUCTION DOCUMENTS

## PLANTING SCHEDULE

SCALE: NTS

**L1.02**  
SHEET #4 OF 5

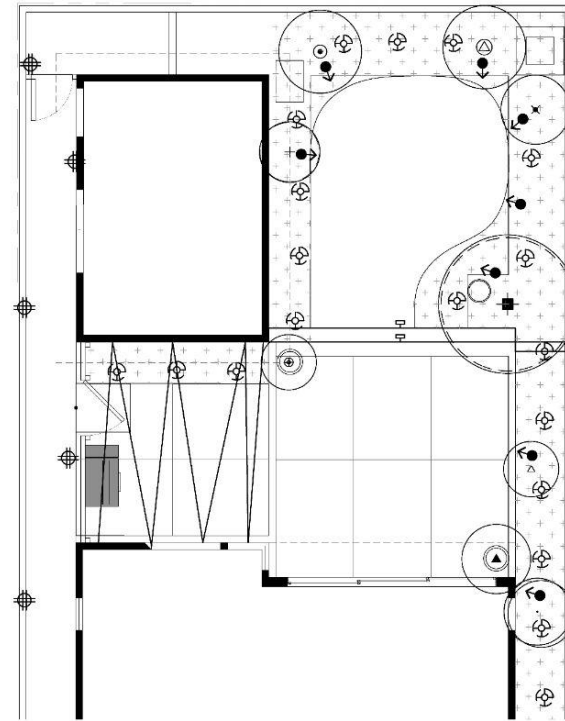




**LIGHTING NOTES:**

1. ALL LIGHT CABLE RUN LOCATIONS AND CIRCUITING TO BE DETERMINED BY LIGHTING CONTRACTOR. VERIFY W/ CONTRACTOR.
2. CONTRACTOR SHALL VERIFY LOCATION OF ALL UNDERGROUND UTILITIES, DRAIN LINES, ETC. PRIOR TO DIGGING OF ANY KIND.
3. INSTALL LOW VOLTAGE LANDSCAPE LIGHTING AND EQUIPMENT, C-UL STANDARD PLUS, BY FX LUMINAIRE, WWW.FX.COM/PRODUCT/UP-LIGHTS/STANDARDIC-UL.
4. INSTALL ONE (1) C-UL UPLIGHT PER TREE (# TOTAL).
5. INSTALL REMAINING LIGHTS AS SHOWN AND VERIFY LOCATION BY DESIGNER ON SITE.
6. CONTRACTOR SHALL BE RESPONSIBLE FOR SIZING TRANSFORMER(S) TO PROVIDE FULL POWER TO EACH FIXTURE.
7. ALL LIGHTS ARE WHITE LIGHT UNLESS OTHERWISE INDICATED.

**1 LIGHTING PLAN - FRONT YARD**  
SCALE: 1/4" = 1'-0"



**LIGHTING SCHEDULE**

SYMBOL	DESCRIPTION	VENDOR	CATALOG #	LAMP	FINISH	QTY	NOTES
	UPLIGHT	FX LUMINAIRE	FR-1LED-CU	1 LED	COPPER	16	VERIFY W/ CONTRACTOR
	PATH LIGHT	FX LUMINAIRE	CALEDIA-CU+G-1LED-CU	1 LED	COPPER	10	VERIFY W/ CONTRACTOR
	AREA LIGHT	FX LUMINAIRE	TBD		COPPER	30	VERIFY W/ CONTRACTOR
	BISTRO LIGHT		TBD		COPPER	TBD	VERIFY W/ CONTRACTOR
	STEP LIGHT	FX LUMINAIRE	TBD		COPPER	10	VERIFY W/ CONTRACTOR

**2 LIGHTING PLAN - BACK YARD**  
SCALE: 1/4" = 1'-0"



**LIONHOUSE DESIGN**  
3201 Alma Ave.  
Manhattan Beach, CA 90266  
P: (925) 323-4917  
E: kate@lionhousedesign.com

ISSUE: \_\_\_\_\_  
REVISIONS:  
# DATE DESCRIPTION  
\_\_\_\_\_  
\_\_\_\_\_  
\_\_\_\_\_  
DATE: 08/24/2022  
DRAWN BY: LS  
COPYRIGHT: 2022

**CONSTRUCTION  
DOCUMENTS**

**LIGHTING PLAN**



SCALE: 1/4" = 1'-0"

**L2.00**  
SHEET #5 OF 5





# LION HOUSE DESIGN

Kate Leuhusen

925-323-4917

Manhattan Beach CA 90266

[kate@lionhousedesign.com](mailto:kate@lionhousedesign.com)

[www.lionhousedesign.com](http://www.lionhousedesign.com)